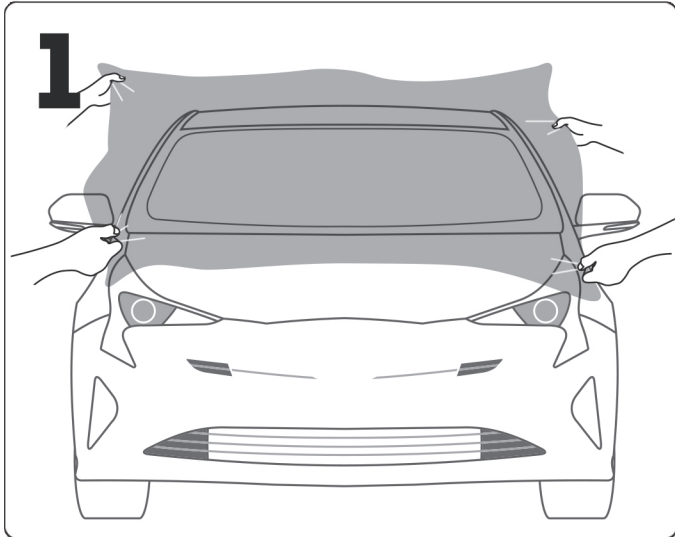


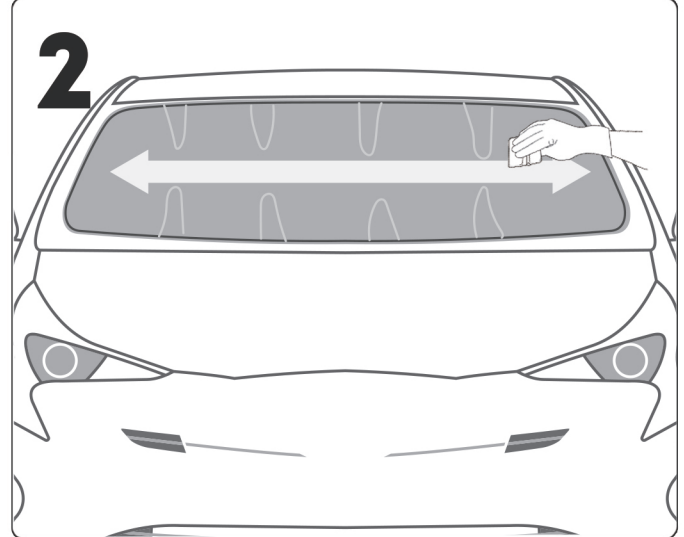


DO NOT REMOVE ANY LAYERS UNTIL INSTRUCTED!



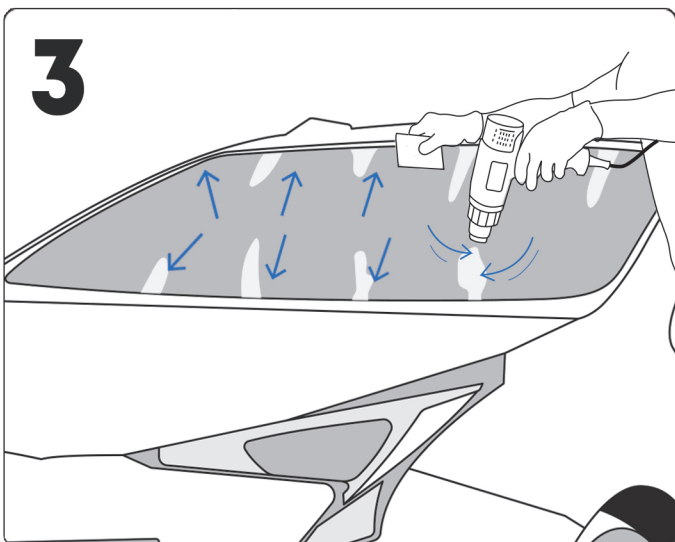
Clean windshield & Spray windshield & Cut film

- ① Clean your windshield thoroughly
- ② Spray water on the windshield
- ③ Cut the appropriate size for the windshield



Squeegee & Make fingers

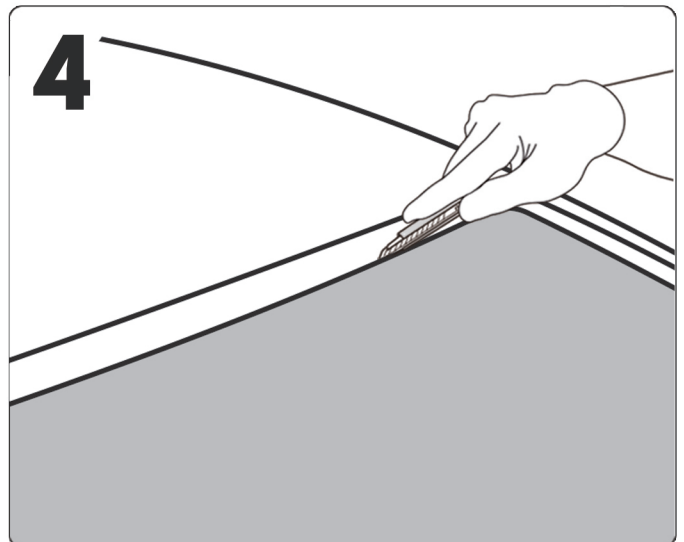
- ① Remove the moisture by using the squeegee
- ② Make fingers natural to the curvature of the windshield



Shrink & Mold

Using the recommended heat 270 °C~320 °C (518 °F~608 °F), heat shrink the film with a heat gun in a steady motion back and forth to mold the protection film. (Open the side windows during this step, so that heat is not trapped in the car)

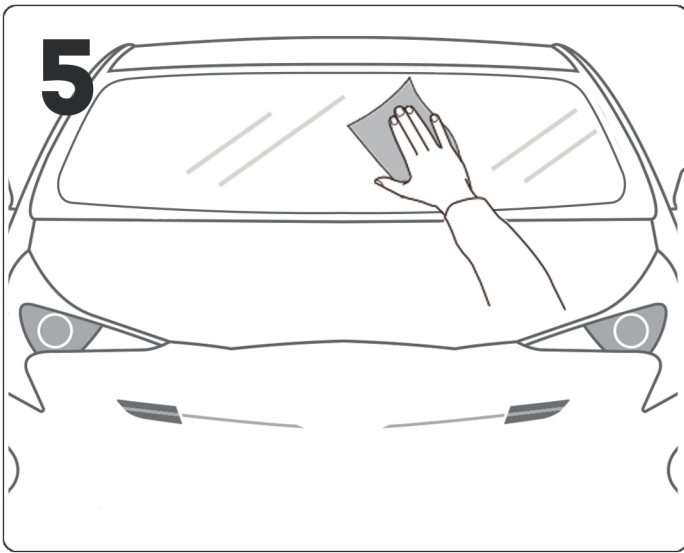
*Both, wet & dry molding are possible.



Cut off any excess film leaving gap

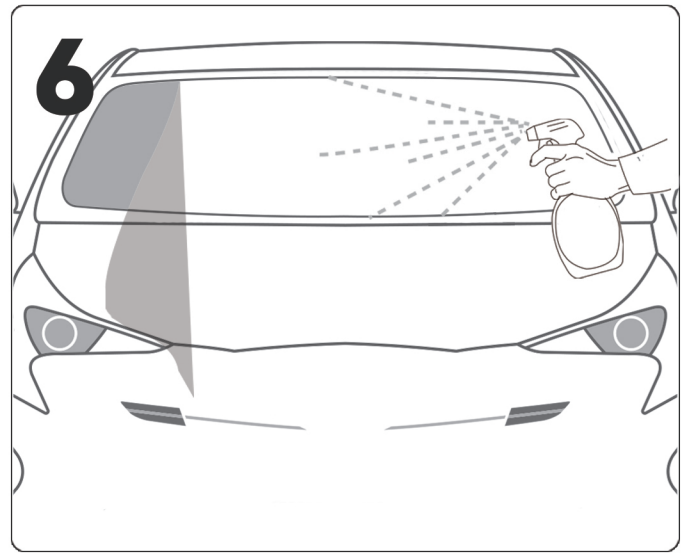
Recommended gap is 3mm

Turn over →



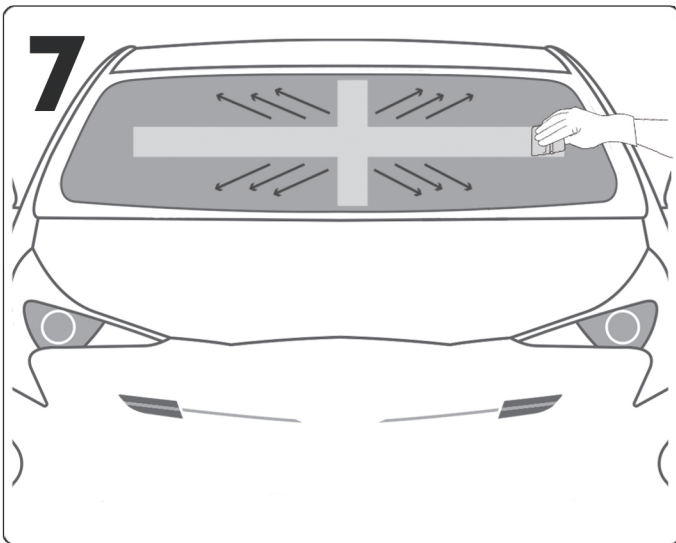
Remove film & Clean thoroughly

- ① Remove the film from the windshield
- ② Clean the windshield thoroughly to remove dust and contaminants that have stuck during the process of cutting and molding



Remove adhesive liner & Spray the adhesive and the windshield with slip solution

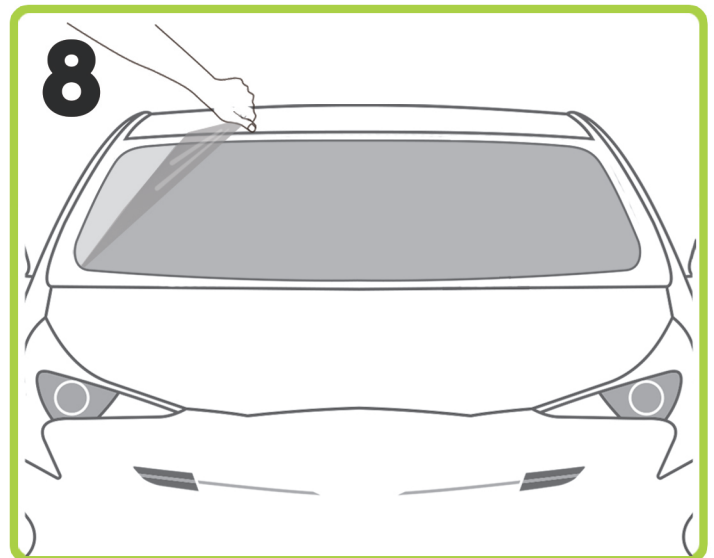
- ① Peel off the adhesive liner (under liner)
- ② Spray the adhesive and windshield side of the film in order to apply to windshield



Reapply film & Squeegee

- ① Reapply the film
- ② Remove the slip solution and air bubbles using the squeegee, as shown in the picture
- ③ Move from center out
(Do not worry about the tiny water humps, they will go away)

★ VERY IMPORTANT!



Remove the top coat liner

- ① Remove the outer liner of the ULTRAFIT WinCrest Protection Film
- ② Re-confirm that the edges of the film are dry and fixed

After several hours, re-inspect the edges again for quality install.

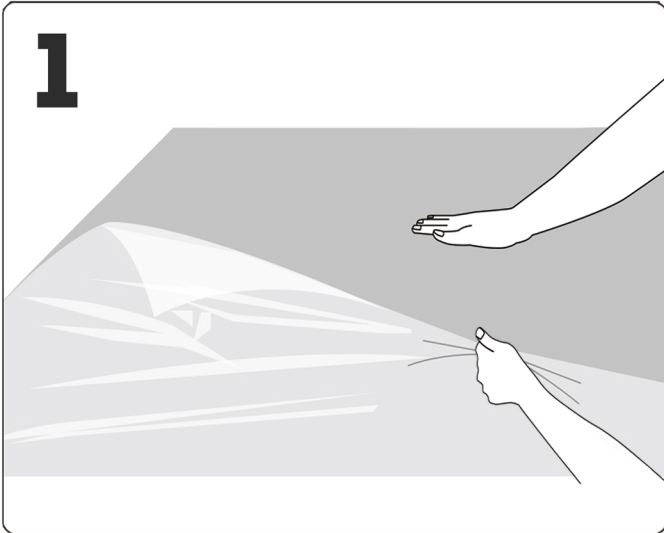
It is important to avoid extreme weather conditions and limit excessive driving. Requires 72 hours for the adhesive to harden.

After completion of installation, we encourage that you switch out your wiper blades for the best results. For wiper blades that have been used for more than 1000km(621 Miles), please replace them right away.

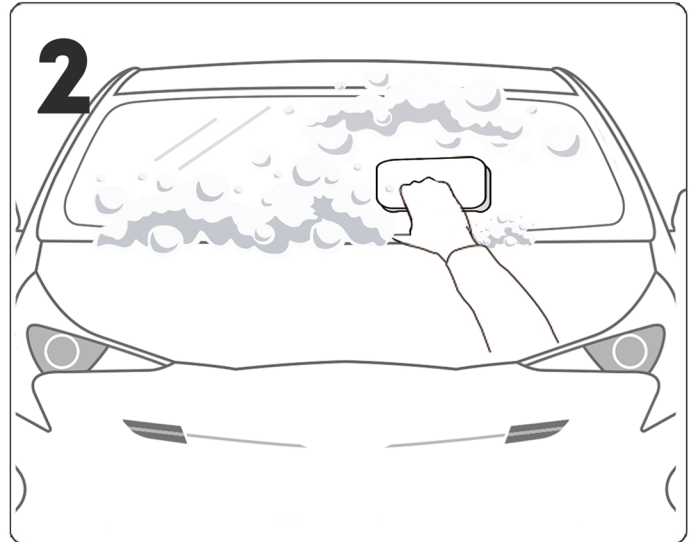
WinCrest EVO Installation Guide

WinCrest films serve as a protective layer on windshields.

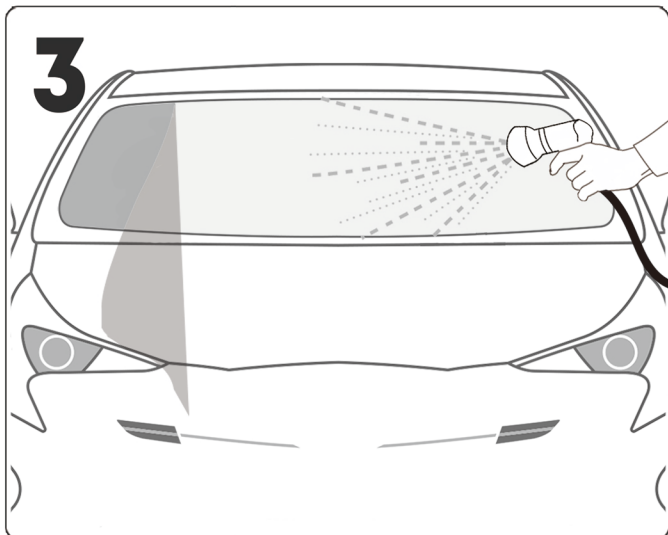
While it significantly reduce the chances of breakage, it does not guarantee full protection against strong impacts.



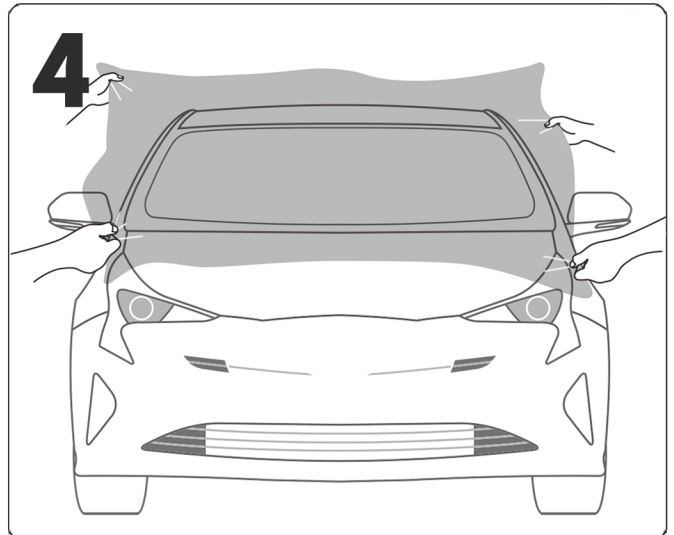
1
Cut the film to the appropriate size for the windshield and remove the cap sheet.



2
Clean the windshield and spray it with slip solution.

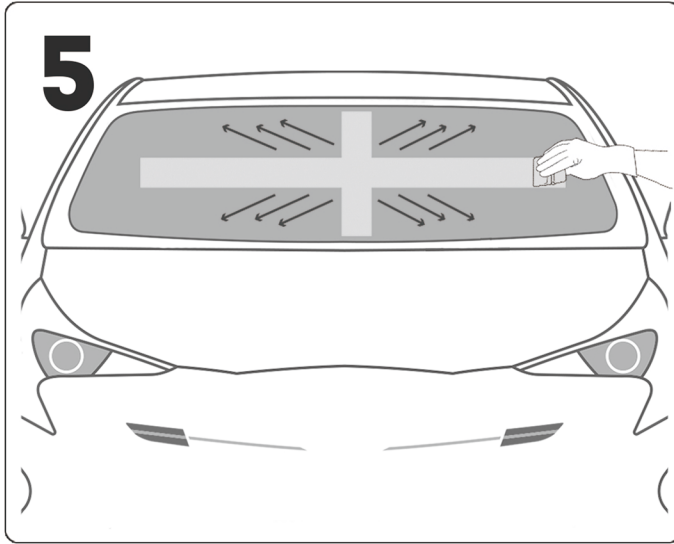


3
Spray the film with room temperature water while removing the release liner.

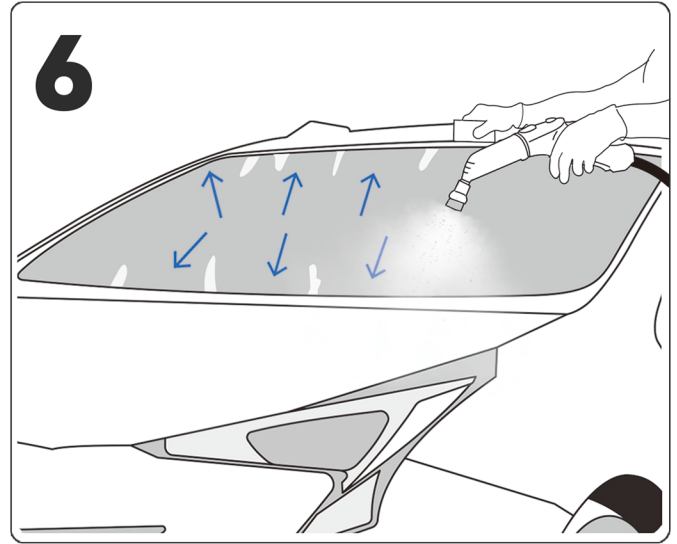


4
Lay the film on the windshield and cut off any excess film.

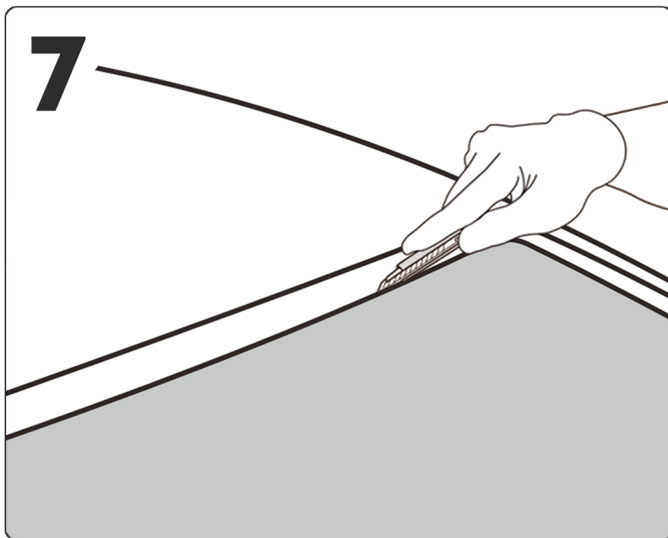
Turn over →



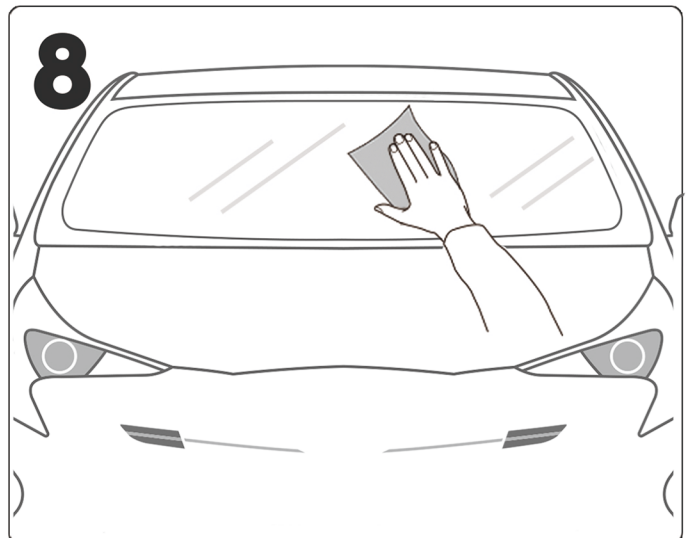
Adjust the film to fit the glass with hands, then start the installation process using a squeegee.



Use a steam gun or hot water under 80°C (170°F) to remove any remaining fingers.



Trim the excess film from the edges, leaving a 1-2mm gap around the glass.



Clean the windshield and make sure that the edges are fixed.

The film may take up to 72 hours to fully cure and bond to the glass.

Therefore, it's important to avoid extreme weather conditions and limit excessive driving during the first 3 days.

Note: Please ensure that the customer receives consultations on aftercare and WinCrest protection film care instructions.