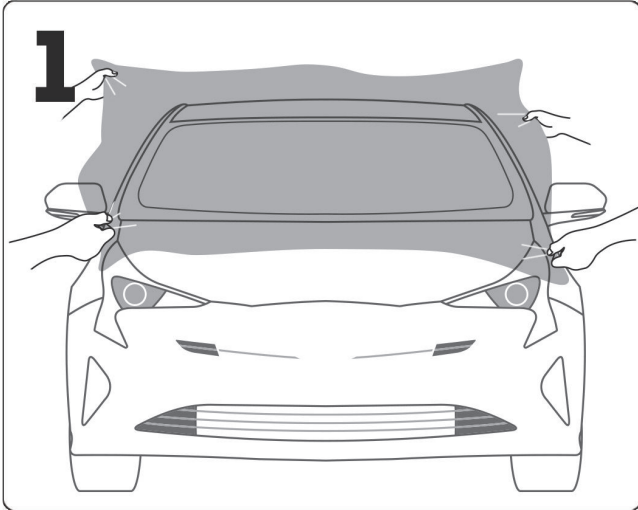




# WinCrest Install Guide

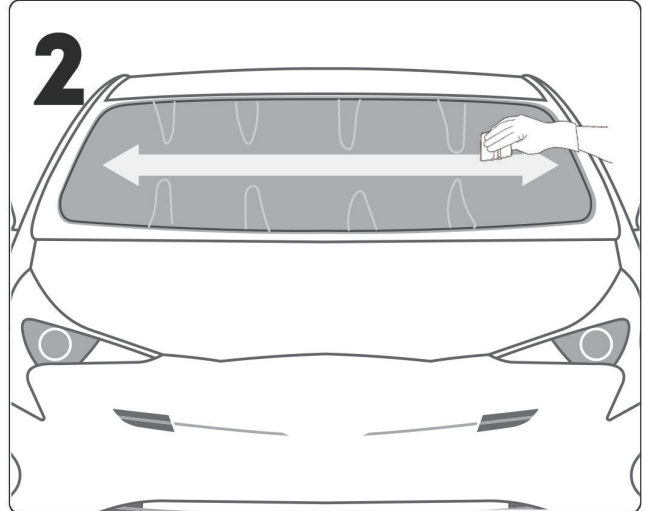


**DO NOT REMOVE ANY LAYERS UNTIL INSTRUCTED!**



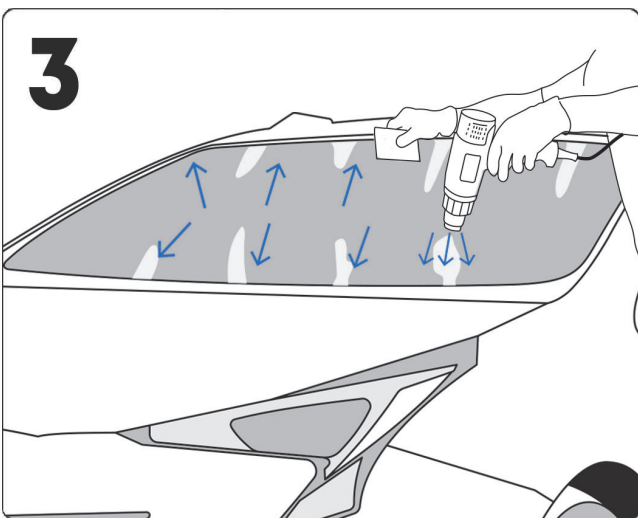
## Clean Windshield & Spray Windshield & Cut Film

- ① Clean your windshield thoroughly
- ② Spray water on the windshield
- ③ Cut the appropriate size for the windshield



## Squeegee & Make fingers

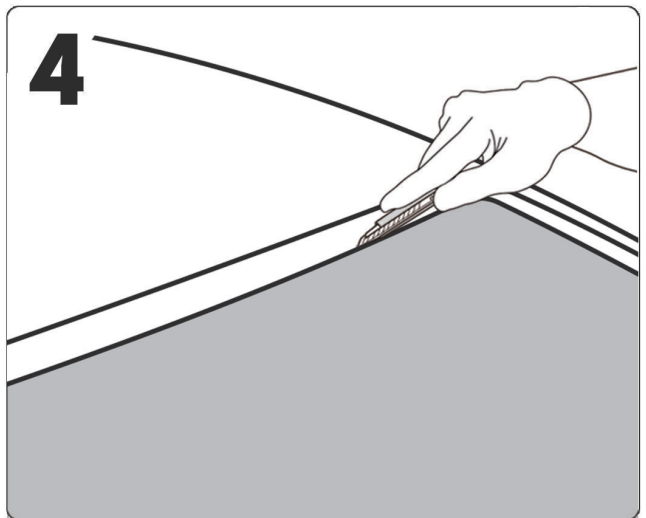
- ① Remove the moisture by using the squeegee
- ② Make fingers natural to the curvature of the windshield



## Shrink & Mold

Using the recommended heat 350°C ~ 450°C (662°F - 842°F), mold the protection film.

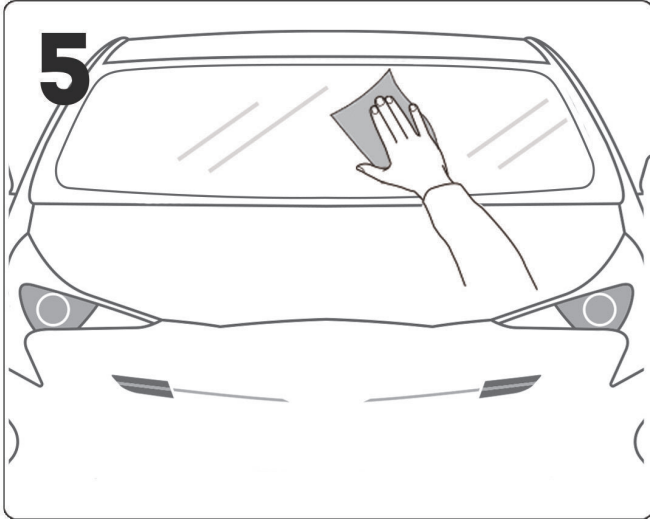
DIRECTION OF THE HEAT GUN SHOULD BE DONE AS THE PICTURE GIVEN (Open the side windows during this step so heat is not trapped in the car)



## Cut excess with gap

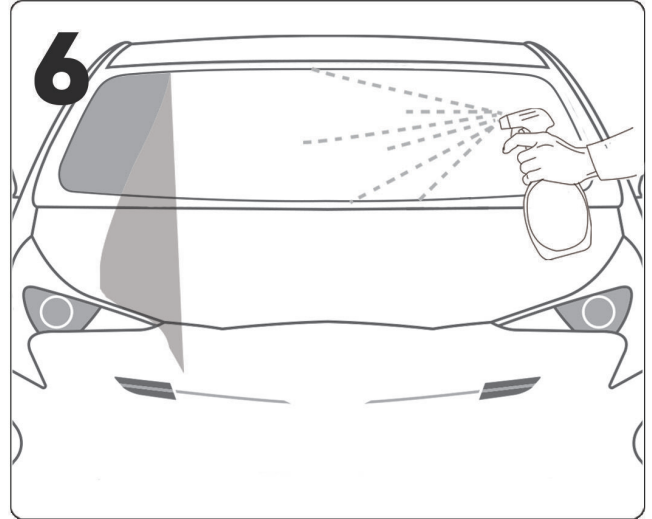
Recommendation of gap is 3mm

**Turn over →**



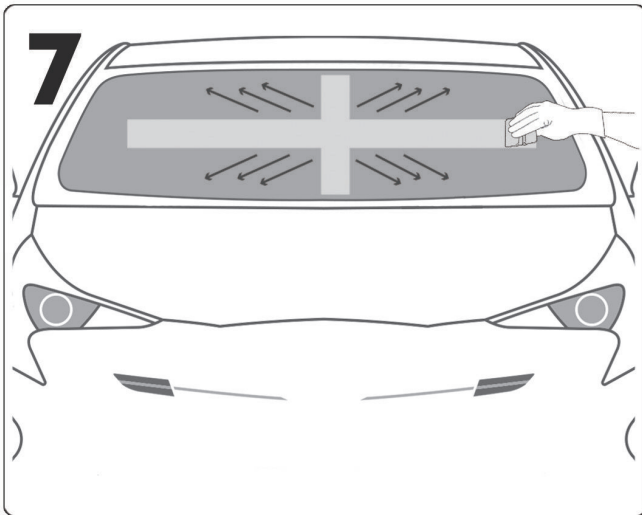
## Remove Film & Clean Thoroughly

- ① Remove the film from the windshield
- ② Clean the windshield thoroughly to remove dust and contaminants that has stuck during the process of cutting and molding



## Remove adhesive liner then spray the adhesive & the windshield with slip solution

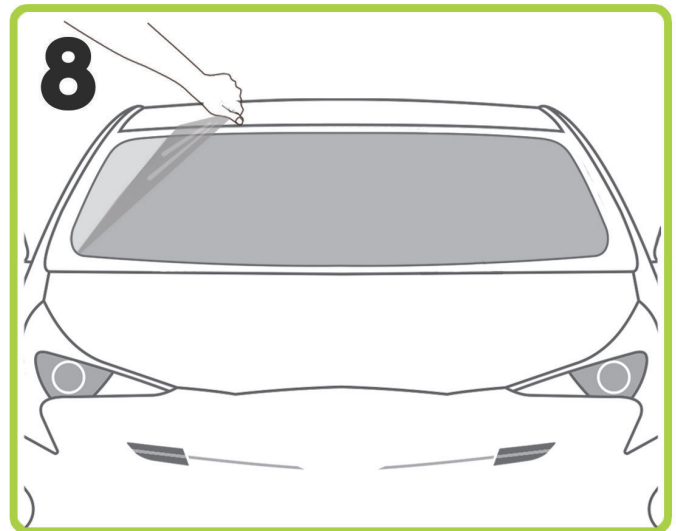
- ① Peel off the adhesive liner (under liner)
- ② Spray the adhesive and windshield side of the film in order to apply to windshield



## Reapply film & Squeegee

- ① Reapply the film
- ② Follow the picture using the squeegee to remove the slip solution and air bubbles.
- ③ Move from center out  
(Do not worry about the tiny water humps, they will go away)

★ **VERY IMPORTANT!**



## Remove the top coat liner

- ① Remove the outer liner of the ULTRAFIT WinCrest Protection Film
- ② Re-confirm that the edges of the film are dry and fixed

**After several hours,** re-inspect the edges again for quality install.

**It is important to** avoid extreme weather conditions and limit excessive driving. Requires 72 hours for the adhesive to harden.

**After completion of installation,** we encourage that you switch out your wiper blades for the best results. For wiper blades that have been used for more than 1000km(621 Miles), please replace them right away.